

20  
19

# MULE™ SIDE X SIDES

GENERATIONS OF STRONG



MULE PRO-MX™ EPS LE in Firecracker Red

**Kawasaki**



# GENERATIONS OF STRONG

For over 30 years, Kawasaki MULE™ side x sides have been the rigid backbone behind Kawasaki's entire utility vehicle category. With the addition of the MULE PRO-MX™, the MULE Family line-up now offers class-leading torque and capable top speed in a mid-size machine. From the compact MULE SX™ Series to the versatile, do-it-all MULE PRO Series, every MULE side x side is built strong to get the job done.



MULE™ 4010 Trans4x4<sup>®</sup> in Dark Royal Red

MULE PRO-FXT™ EPS LE in Super Black

MULE PRO-MX™ EPS LE in Firecracker Red

## MULE™ SIDE X SIDE CONTENTS

### 3- TO 6-PASSENGER TRANS CAB™

- 04-05** | OVERVIEW
- 06-09** | MULE PRO-FXT™
- 10-13** | MULE PRO-DXT™

### 2- TO 4-PASSENGER TRANS CAB™

- 14-15** | OVERVIEW
- 16-19** | MULE™ TRANS CAB™

### 3-PASSENGER

- 20-21** | OVERVIEW
- 22-25** | MULE PRO-FXR™
- 26-29** | MULE PRO-FX™
- 30-33** | MULE PRO-DX™

### 2-PASSENGER

- 34-35** | OVERVIEW
- 36-43** | MULE PRO-MX™
- 44-47** | MULE™ 4010/4000
- 48-51** | MULE-SX™

### EXTRAS

- 40-43** | ACCESSORIES
- 54-59** | SPECIFICATIONS





MULE SX™ 4x4 XC SE in Super Black

MULE PRO-FXR™ in Atomic Silver

MULE PRO-MX™ EPS in Timberline Green



Kawasaki side x sides, ATVs and Jet Ski® watercraft are assembled by Kawasaki Motors Manufacturing Corp., U.S.A. from foreign and domestic parts in Lincoln, NE.



### KAWASAKI STRONG 3-YEAR LIMITED WARRANTY

The Kawasaki STRONG 3-Year Limited Warranty is standard with every 2019 MULE™ side x side. Every machine we sell is backed by the unrivaled engineering knowledge of Kawasaki Heavy Industries, Ltd. So when we say that our products are the strongest, we back it up with extreme confidence.

\*Assembled in U.S.A. badge does not apply to MULE PRO-MX™ models.

WARN® ProVantage™/ Vantage™ – WARN®, the WARN® logo and THE RED HOOK STRAP are registered trademarks of Warn Industries, Inc. ProVantage™ and Vantage™ are trademarks of Warn Industries, Inc.

Accessorized units shown.



MULE PRO-FXT™ & MULE PRO-DXT™

# 3- TO 6-PASSENGER SIDE X SIDES

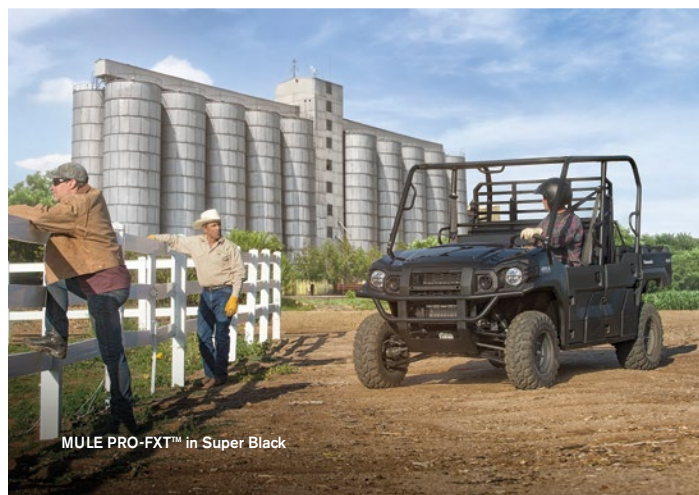
With a seating capacity of up to six passengers, the MULE PRO-FXT™ and MULE PRO-DXT™ side x sides are built for comfort, strength, capability and durability. Find the perfect vehicle that'll get the job done and support everyone along the way.



## TRANS CAB™

With the class-exclusive three- to six-passenger Trans Cab™ system, one person can change seating from three passengers to six passengers in about a one-minute trip around the vehicle—no tools needed.





MULE PRO-FXT™ in Super Black



MULE PRO-FXT™ RANCH EDITION in Metallic Rustic Bronze



MULE PRO-FXT™ EPS LE in Super Black



MULE PRO-FXT™ EPS in Bright White



MULE PRO-FXT™ EPS CAMO in Realtree Xtra® Green Camo

Realtree Xtra® Green Camo — Realtree APG-XTRA Camouflage Design  
© 2012 of Jordan Outdoor Enterprises, Ltd., all rights reserved.



TRANSFORM THE WAY YOU LIVE

# MULE PRO-FXT™



MULE PRO-FXT™ RANCH EDITION in Metallic Rustic Bronze

The MULE PRO-FXT™ side x sides allow you to go from transporting equipment at the jobsite to taking the whole family on an adventure. With a rugged diamond plate steel-floored cargo bed, the MULE PRO-FXT can take on a generous payload, even in six-passenger mode. With the ability to move people and payloads, the MULE PRO-FXT can do it all.





MULE PRO-FXT™ EPS CAMO in Realtree Xtra® Green Camo

Realtree Xtra® Green Camo – Realtree APG-XTRA Camouflage Design © 2012 of Jordan Outdoor Enterprises, Ltd., all rights reserved.

The MULE PRO-FXT™ side x sides have the comfort, amenities and an over 12 gallon under-seat storage bin to make those long hours spent in the field comfortable and productive. The MULE PRO-FXT models have two front and two rear 12-volt DC power outlets, all of which are supported by a high-output 75-amp generator. Drive in exceptional comfort while staying protected from the elements with four integrated doors that help to keep out mud, water and debris.



MULE PRO-FXT™ EPS LE in Super Black

## POWER

The quiet 812cc, DOHC, three-cylinder, liquid-cooled, DFI® engine produces a colossal 48 pound-feet of hardworking torque. Complemented by a Continuously Variable Transmission (CVT), power delivery is instant and consistently smooth. The MULE PRO-FXT™ side x sides also have selectable 2WD/4WD and dual-mode rear differential for further ground-gripping proficiency.



MULE PRO-FXT™

# MODEL OPTIONS



MULE PRO-FXT™ EPS in Timberline Green





● Metallic Rustic Bronze



● Super Black ● Firecracker Red



● Realtree Xtra® Green Camo



○ Bright White ● Timberline Green



● Super Black

### MULE PRO-FXT™ RANCH EDITION

- 3- to 6-passenger Trans Cab™ System
- 812cc, 3-cylinder, DOHC, 4-stroke Engine
- Continuously Variable Transmission (CVT)
- Electrically Selectable 2WD/4WD with Dual-mode Rear Differential
- Under-seat Storage Bin
- Speed-sensitive Electric Power Steering (EPS) with Adjustable Tilt Steering Wheel
- Sun Top and Auxiliary LED Headlights
- Special Edition Badging, Painted Hood and Cast Aluminum Wheels
- WARN® Vantage™ Winch with Remote

### MULE PRO-FXT™ EPS LE

- 3- to 6-passenger Trans Cab™ System
- 812cc, 3-cylinder, DOHC, 4-stroke Engine
- Continuously Variable Transmission (CVT)
- Electrically Selectable 2WD/4WD with Dual-mode Rear Differential
- Under-seat Storage Bin
- Speed-sensitive Electric Power Steering (EPS) with Adjustable Tilt Steering Wheel
- Sun Top and Auxiliary LED Headlights
- Cast Aluminum Wheels

### MULE PRO-FXT™ EPS CAMO

- 3- to 6-passenger Trans Cab™ System
- 812cc, 3-cylinder, DOHC, 4-stroke Engine
- Continuously Variable Transmission (CVT)
- Electrically Selectable 2WD/4WD with Dual-mode Rear Differential
- Under-seat Storage Bin
- Speed-sensitive Electric Power Steering (EPS) with Adjustable Tilt Steering Wheel
- Auxiliary LED Headlights
- Realtree Xtra® Green Camo Bodywork

### MULE PRO-FXT™ EPS

- 3- to 6-passenger Trans Cab™ System
- 812cc, 3-cylinder, DOHC, 4-stroke Engine
- Continuously Variable Transmission (CVT)
- Electrically Selectable 2WD/4WD with Dual-mode Rear Differential
- Under-seat Storage Bin
- Speed-sensitive Electric Power Steering (EPS) with Adjustable Tilt Steering Wheel

### MULE PRO-FXT™

- 3- to 6-passenger Trans Cab™ System
- 812cc, 3-cylinder, DOHC, 4-stroke Engine
- Continuously Variable Transmission (CVT)
- Electrically Selectable 2WD/4WD with Dual-mode Rear Differential
- Under-seat Storage Bin
- Rack and Pinion Steering



VERSATILITY RUNS ON DIESEL

# MULE PRO-DXT™



MULE PRO-DXT™ EPS in Timberline Green

The MULE PRO-DXT™ side x sides combine the rugged full-size MULE™ PRO chassis capability and versatility with the hardworking muscle of a 993cc diesel engine. The MULE PRO-DXT has the ability to move gear, tools, materials and people at the jobsite. Power through your workday efficiently while enjoying the comfort and refinement of MULE PRO Diesel side x sides.

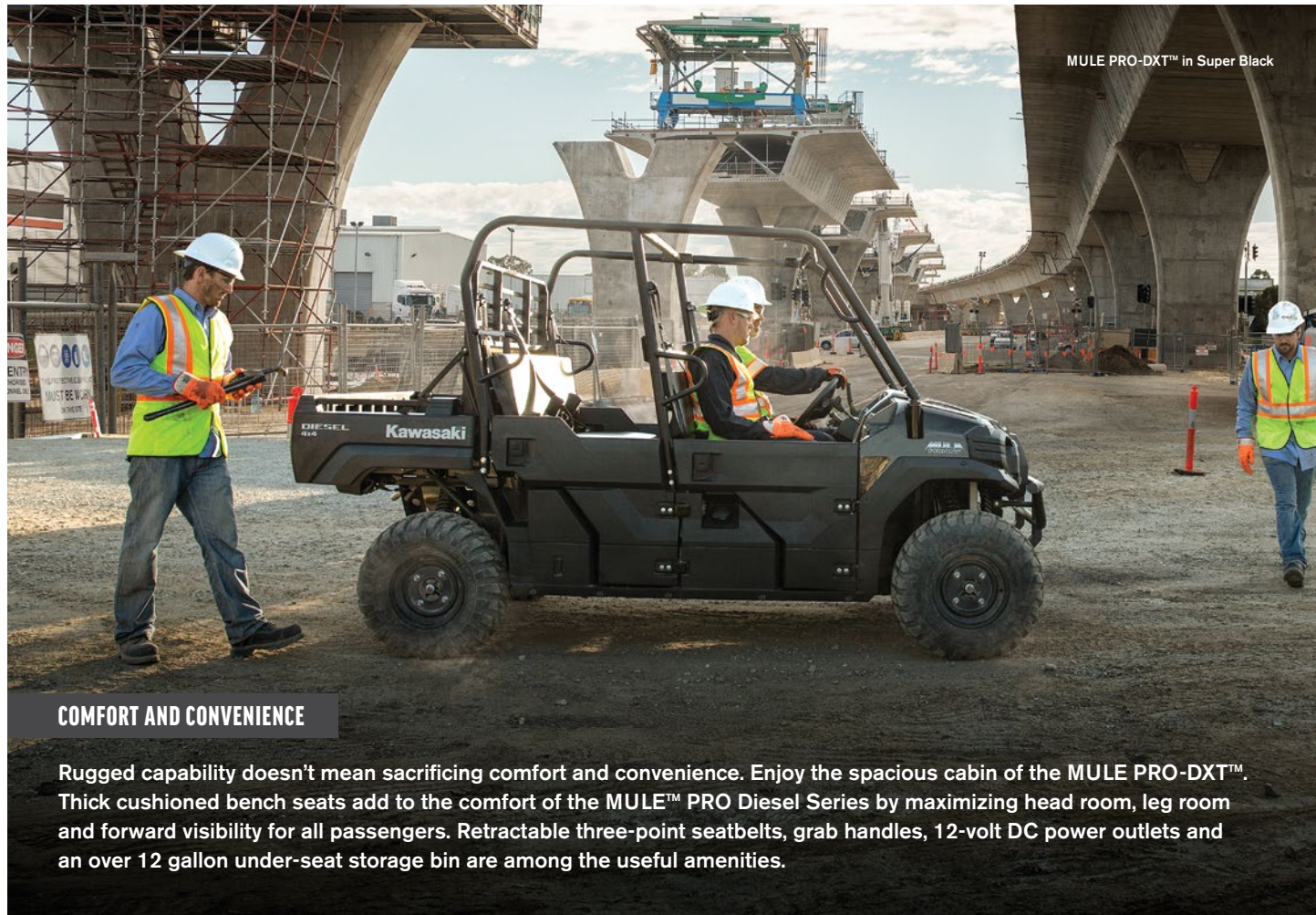




MULE PRO-DXT™ in Super Black

### DIESEL ENGINE

A strong and efficient three-cylinder diesel engine powers the MULE PRO-DXT™ side x side. The 993cc diesel engine produces over 38 pound-feet of torque at low rpms to maximize efficiency for jobs that demand hauling or towing high capacity loads all day long. A high-output 55-amp generator can power accessories and electronics for even more versatility in the field.



MULE PRO-DXT™ in Super Black

### COMFORT AND CONVENIENCE

Rugged capability doesn't mean sacrificing comfort and convenience. Enjoy the spacious cabin of the MULE PRO-DXT™. Thick cushioned bench seats add to the comfort of the MULE™ PRO Diesel Series by maximizing head room, leg room and forward visibility for all passengers. Retractable three-point seatbelts, grab handles, 12-volt DC power outlets and an over 12 gallon under-seat storage bin are among the useful amenities.



MULE PRO-DXT™

# MODEL OPTIONS



MULE PRO-DXT™ in Super Black





○ Bright White   ● Timberline Green

### MULE PRO-DXT™ EPS

- 3- to 6-passenger Trans Cab™ System
- 993cc, 3-cylinder, Diesel Engine
- Continuously Variable Transmission (CVT)
- Electrically Selectable 2WD/4WD with Dual-mode Rear Differential
- 1-ton Towing Capacity with Standard 2-inch Receiver Hitch
- Under-seat Storage Bin
- Speed-sensitive Electric Power Steering (EPS) with Adjustable Tilt Steering Wheel



● Super Black

### MULE PRO-DXT™

- 3- to 6-passenger Trans Cab™ System
- 993cc, 3-cylinder, Diesel Engine
- Continuously Variable Transmission (CVT)
- Electrically Selectable 2WD/4WD with Dual-mode Rear Differential
- 1-ton Towing Capacity with Standard 2-inch Receiver Hitch
- Under-seat Storage Bin
- Rack and Pinion Steering with Adjustable Tilt Steering Wheel



MULE PRO-DXT™ EPS in Timberline Green

Accessorized units shown.



MULE™ 4010 TRANS4x4® & MULE 4000 TRANS™

# 2- TO 4-PASSENGER SIDE X SIDES

The powerful 2019 MULE™ 4010 Trans4x4® and MULE 4000 Trans™ side x sides are built to offer an unstoppable work ethic, industrial-grade design and a powerful V-twin engine.



MULE™ 4010 Trans4x4® in Dark Royal Red

## TRANS CAB™

As you take on a job, the demands of the day are bound to change. Sometimes you need more hands. Sometimes you need more cargo space. With the versatility of the two- to four-passenger seating system, the MULE™ 4010 Trans4x4® and MULE 4000 Trans™ side x sides can quickly be converted from two-passenger vehicles to four-passenger vehicles—with no tools needed.





MULE™ 4010 Trans4x4® in Dark Royal Red



MULE 4000 Trans™ in Bright White



MULE™ 4010 Trans4x4® in Dark Royal Red



MULE 4000 Trans™ in Bright White



WORKDAY CHIEF

# MULE 4000 TRANS™ & 4010 TRANS4x4®



MULE 4000 Trans™ in Bright White

Built to be as versatile as they are strong, the MULE 4000 Trans™ and MULE™ 4010 Trans4x4® side x sides boast a convertible design that makes it easy to transform seating and cargo areas based on the needs of the job.





### HAULING & TOWING

These MULE™ side x sides pack major pulling power, giving you 1,200 pounds of towing capacity, making it easy to move extra equipment, supplies and tools. While you're at it, haul up to 800 pounds (400 pounds in two-row configuration) in the durable steel cargo bed designed to handle tough loads with ease. The cargo bed also tilts for easy access to the engine compartment.



MULE™ 4010 Trans4x4® in Dark Royal Red

### COMFORT & CONVENIENCE

Tilting plush steering wheel, padded bench seats and passenger grab bars help make the drive comfortable. The dashboard houses two glove boxes, a 12V DC outlet and cup holders for added convenience, along with a digital fuel gauge and hour meter. A generous 15.8-gallon storage space is located under the hood, making it easy to stow additional belongings.



MULE™ 4010 TRANS4x4® & MULE 4000 TRANS™

# MODEL OPTIONS



MULE 4000 Trans™ in Bright White





● Realtree Xtra® Green Camo

### MULE™ 4010 TRANS4x4® CAMO

- 2- to 4-passenger Trans Cab™ System
- 617cc, V-twin, 4-stroke Engine
- Continuously Variable Transmission (CVT)
- Electric Power Steering (EPS)
- Selectable 2WD/4WD with Dual-mode Rear Differential
- Realtree Xtra® Green Camo Bodywork



● Dark Royal Red ● Timberline Green

### MULE 4010 TRANS4x4®

- 2- to 4-passenger Trans Cab™ System
- 617cc, V-twin, 4-stroke Engine
- Continuously Variable Transmission (CVT)
- Electric Power Steering (EPS)
- Selectable 2WD/4WD with Dual-mode Rear Differential



○ Bright White

### MULE 4000 TRANS™

- 2- to 4-passenger Trans Cab™ System
- 617cc, V-twin, 4-stroke Engine
- Continuously Variable Transmission (CVT)
- Electric Power Steering (EPS)
- 2WD with Dual-mode Rear Differential

Realtree Xtra® Green Camo – Realtree APG-XTRA Camouflage Design © 2012 of Jordan Outdoor Enterprises, Ltd., all rights reserved.



MULE™ 4010 Trans4x4® in Dark Royal Red



MULE PRO-FXR™, MULE PRO-FX™ & MULE PRO-DX™

# 3-PASSENGER SIDE X SIDES

Known for their undeniable power and durability, the three-passenger MULE™ side x sides have the capability to efficiently work through tough projects. The innovative balance between high capacity and power makes for an innate ability to get the job done.



MULE PRO-FXR™ in Candy Plasma Blue

## CAPABILITY

Built on platforms as rugged as their look, the MULE PRO-FXR™, MULE PRO-FX™, and MULE PRO-DX™ side x sides all mean business. Whether your goal is hauling heavy cargo across rugged terrain or riding endlessly across your property, these side x sides were made to get the job done with raw strength and unmatched comfort.

Accessorized units shown.

WARN® ProVantage™/ Vantage™ – WARN®, the WARN® logo and THE RED HOOK STRAP are registered trademarks of Warn Industries, Inc. ProVantage™ and Vantage™ are trademarks of Warn Industries, Inc.





MULE PRO-FX™ EPS in Bright White



MULE PRO-DX™ EPS in Bright White



MULE PRO-FXR™ in Candy Plasma Blue



MULE PRO-FX™ EPS LE in Firecracker Red



WORK HARD. PLAY HARDER.

# MULE PRO-FXR™



MULE PRO-FXR™ in Atomic Silver

The 2019 Kawasaki MULE PRO-FXR™ side x side highlights the “play” side of the Kawasaki MULE™ PRO Series. Infused with style and agility for a functional balance of utility and recreation, the MULE PRO-FXR is ready to put in the work and cut loose when the chores are done. Take on your weekend adventures the same way you conquer your work week, from behind the wheel of this rugged machine.

WARN® ProVantage™/ Vantage™ – WARN®, the WARN® logo and THE RED HOOK STRAP are registered trademarks of Warn Industries, Inc. ProVantage™ and Vantage™ are trademarks of Warn Industries, Inc.



## DRIVE COMFORT

Enjoy a comfortable drive throughout the day with plush front and rear independent suspension. The powerful three-cylinder engine is extremely quiet with a refined sound output that won't exhaust your senses. A premium two-tone contoured bench seat accommodates up to three adults and provides plush support to you and your passengers.



## PREMIUM STYLING

The premium appearance and aggressive styling of the MULE PRO-FXR™ stands out among the Kawasaki side x sides. Durable steel front and rear bumpers add to the rugged and capable appearance while helping to protect the fenders and bodywork. A stylized front grill, cast aluminum wheels and painted hood will be sure to turn heads with its high-end color and styling features.

MULE PRO-FXR™ in Candy Plasma Blue



## HANDLING & DRIVABILITY

The MULE PRO-FXR™ has an agile chassis that enables easy maneuvering in tight spaces while the shorter wheelbase, tight turning radius and generous break-over angle help manage technical terrain. A wide track width gives it a sure-footed stance and improved cornering capabilities. Make your next outing an adventure with the capable, fun-to-drive MULE PRO-FXR side x side.



MULE PRO-FXR™ in Atomic Silver

Accessorized units shown.



MULE PRO-FXR™

# MODEL OPTIONS



MULE PRO-FXR™ in Candy Plasma Blue





● Candy Plasma Blue    ● Atomic Silver

### MULE PRO-FXR™

- 812cc, 3-cylinder, DOHC, 4-stroke Engine
- Continuously Variable Transmission (CVT)
- Electrically Selectable 2WD/4WD with Dual-mode Rear Differential
- Speed-sensitive Electric Power Steering (EPS) with Adjustable Tilt Steering Wheel
- Agile Handling
- Premium Styling, Painted Hood and Cast Aluminum Wheels
- 2-tone Contoured Seat
- Sun Top, Auxiliary LED Headlights
- Under-seat Storage Bin
- Steel Front and Rear Bumpers

WARN® ProVantage™/ Vantage™ – WARN®, the WARN® logo and THE RED HOOK STRAP are registered trademarks of Warn Industries, Inc. ProVantage™ and Vantage™ are trademarks of Warn Industries, Inc.



MULE PRO-FXR™ in Atomic Silver

Accessorized units shown.



MAXIMIZE YOUR CAPACITY

# MULE PRO-FX™



MULE PRO-FX™ in Super Black

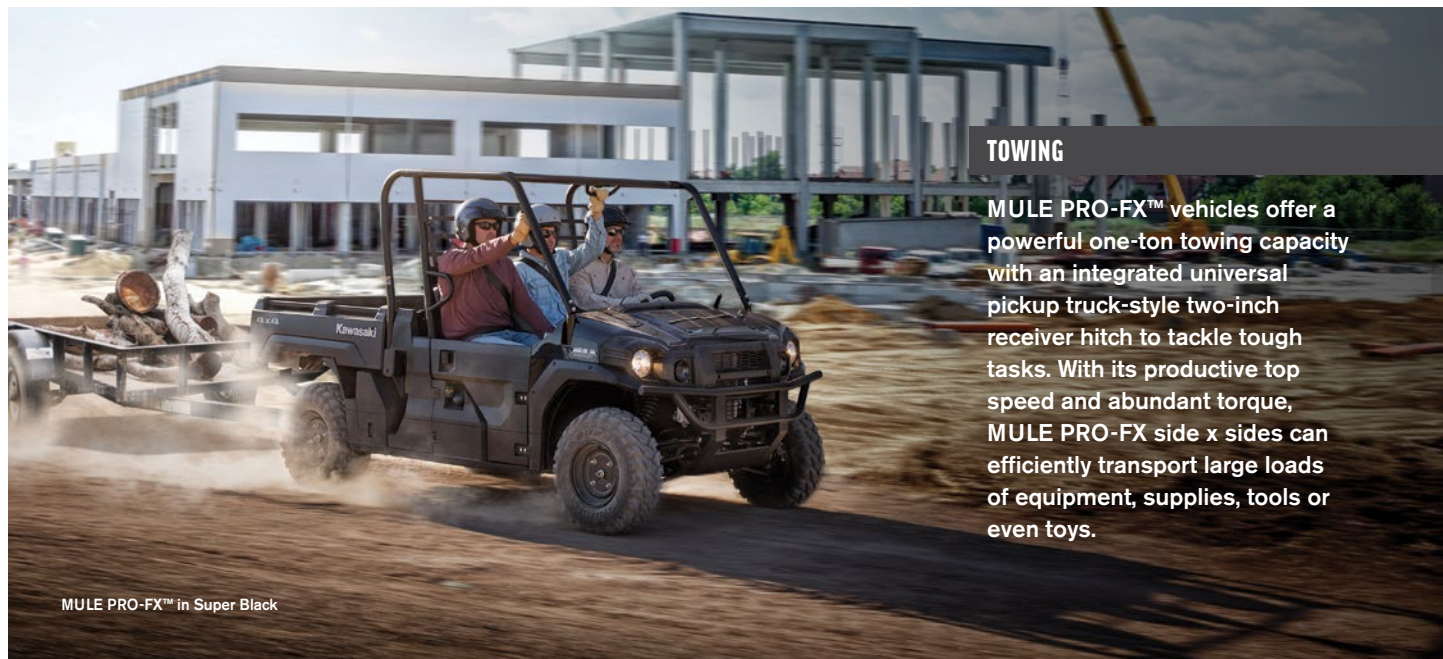
MULE PRO-FX™ side x sides are powerful, high-capacity, three-passenger vehicles that are as durable as your days are long. With more than 130 years of KHI engineering, MULE PRO-FX side x sides are built Kawasaki STRONG. With excellent performance for both work and play, they are the perfect companion for everyone with all-day comfort and strong, dependable performance.





### CLASS-LEADING CARGO BED

With a massive 20 square feet of cargo bed space (the largest in its class) and up to 1,000 pounds of cargo capacity, MULE PRO-FX™ side x sides can transport tools and supplies with ease. The rugged steel-based cargo bed can accommodate level loading and unloading of a standard wooden pallet (40" x 48") that easily fits with the tailgate closed for transport.



### TOWING

MULE PRO-FX™ vehicles offer a powerful one-ton towing capacity with an integrated universal pickup truck-style two-inch receiver hitch to tackle tough tasks. With its productive top speed and abundant torque, MULE PRO-FX side x sides can efficiently transport large loads of equipment, supplies, tools or even toys.

MULE PRO-FX™ in Super Black

### SUSPENSION & BRAKES

Four-wheel independent suspension provides plush action over a variety of terrain. Featuring twin-tube shocks and over 8.5 inches of wheel travel, it helps MULE PRO-FX™ side x sides maintain steady traction for the comfort and confidence to get the job done. Four-wheel disc brakes featuring two-piston calipers up front provide strong progressive braking power. A hand-actuated parking brake helps to secure the vehicle position when parked.



MULE PRO-FX™ in Super Black



MULE PRO-FX™

# MODEL OPTIONS



MULE PRO-FX™ EPS LE in Firecracker Red





● Firecracker Red



○ Bright White ● Timberline Green



● Super Black

### MULE PRO-FX™ EPS LE

- 812cc, 3-cylinder, DOHC, 4-stroke Engine
- Continuously Variable Transmission (CVT)
- Electrically Selectable 2WD/4WD with Dual-mode Rear Differential
- 1-ton Towing Capacity with Standard 2-inch Receiver Hitch
- Under-seat Storage Bin
- Speed-sensitive Electric Power Steering (EPS) with Adjustable Tilt Steering Wheel
- Cast Aluminum Wheels
- Sun Top and Auxiliary LED Headlights

### MULE PRO-FX™ EPS

- 812cc, 3-cylinder, DOHC, 4-stroke Engine
- Continuously Variable Transmission (CVT)
- Electrically Selectable 2WD/4WD with Dual-mode Rear Differential
- 1-ton Towing Capacity with Standard 2-inch Receiver Hitch
- Under-seat Storage Bin
- Speed-sensitive Electric Power Steering (EPS) with Adjustable Tilt Steering Wheel

### MULE PRO-FX™

- 812cc, 3-cylinder, DOHC, 4-stroke Engine
- Continuously Variable Transmission (CVT)
- Electrically Selectable 2WD/4WD with Dual-mode Rear Differential
- 1-ton Towing Capacity with Standard 2-inch Receiver Hitch
- Under-seat Storage Bin
- Rack and Pinion Steering



MULE PRO-FX™ in Super Black



FLEX SOME DIESEL MUSCLE

# MULE PRO-DX™



MULE PRO-DX™ EPS in Bright White

The MULE PRO-DX™ side x side combines the rugged full-size MULE™ PRO chassis capability and versatility with the hardworking muscle of a 993cc diesel engine. Utilize the capabilities of the MULE PRO-DX at the jobsite with the ability to move gear, tools, materials and people. Power through your workday efficiently while enjoying the comfort and refinement of the MULE PRO Diesel vehicles.





## DIESEL ENGINE

A strong and efficient three-cylinder diesel engine powers the MULE PRO-DX™ side x side. The 993cc diesel engine produces abundant torque at low rpms to maximize efficiency for jobs that demand hauling or towing high-capacity loads all day long. A high-output 55-amp generator can power accessories and electronics for even more versatility in the field.

MULE PRO-DX™ EPS in Bright White



## COMFORT & CONVENIENCE

Rugged capability doesn't mean sacrificing comfort and convenience. Enjoy the spacious cabin of the MULE PRO-DX™ side x side. Thick cushioned bench seating adds to the comfort of the MULE PRO-DX along with maximum head room, leg room and forward visibility for all passengers. Retractable three-point seatbelts and grab handles help provide a secure ride for your crew, while 12-volt DC power outlets and an over 12 gallon under-seat storage bin are among the useful amenities.

Accessorized units shown.



MULE PRO-DX™

# MODEL OPTIONS



MULE PRO-DX™ EPS in Bright White





○ Bright White

### MULE PRO-DX™ EPS

- 993cc, 3-cylinder, Diesel Engine
- Continuously Variable Transmission (CVT)
- Electrically Selectable 2WD/4WD with Dual-mode Rear Differential
- 1-ton Towing Capacity with Standard 2-inch Receiver Hitch
- Massive 20 Sq-ft Cargo Bed
- Speed-sensitive Electric Power Steering (EPS) with Adjustable Tilt Steering Wheel



MULE PRO-DX™ EPS in Bright White



MULE PRO-MX™, MULE™ 4010 4x4, MULE™ 4000 & MULE SX™

# 2-PASSENGER SIDE X SIDES

The two-passenger MULE™ side x sides are for those who need to pack a powerful punch without hauling as many people. Don't take on the demands of your workday alone—let the MULE side x sides do the heavy lifting. Find the right MULE vehicle that fits your workload.



MULE PRO-MX™ EPS LE in Firecracker Red

## RELIABLE

The utility efforts within the two-passenger side x sides are concentrated on the hauling and towing capabilities, resulting in a vehicle guaranteed to put in hard days of work. Designed to perform in tighter environments, these agile workhorses are built with the same Kawasaki STRONG DNA that will forever define MULE™.

Accessorized units shown.

WARN® ProVantage™/ Vantage™ – WARN®, the WARN® logo and THE RED HOOK STRAP are registered trademarks of Warn Industries, Inc. ProVantage™ and Vantage™ are trademarks of Warn Industries, Inc.





MULE SX™ 4x4 SE in Bright White



MULE™ 4010 4x4 in Dark Royal Red



MULE SX™ 4x4 XC SE in Super Black



MULE PRO-MX™ EPS CAMO in Camouflage TrueTimber® HTC Green

™/® & © 2018 TrueTimber Outdoors Holding Company, LLC. Manufactured and/or distributed under official license by Kawasaki Motors Corp., U.S.A.



STRONG MEETS MID-SIZE

# MULE PRO-MX™



MULE PRO-MX™ EPS LE in Firecracker Red

The 2019 Kawasaki MULE PRO-MX™ side x sides are the first mid-size option of the MULE™ PRO Series. The MULE PRO-MX offers a comfortable fit for two passengers and has the muscle to cover more ground in less time, with the versatility and capability to have some fun when the work is done.

WARN® ProVantage™/ Vantage™ – WARN®, the WARN® logo and THE RED HOOK STRAP are registered trademarks of Warn Industries, Inc. ProVantage™ and Vantage™ are trademarks of Warn Industries, Inc.





MULE PRO-MX™ EPS in Timberline Green

## ENGINE & POWERTRAIN

Power through your workday with the 695cc fuel-injected engine of the MULE PRO-MX™. Relish the challenge of rugged and hilly terrain with class-leading torque and responsive power, while the Continuously Variable Transmission (CVT) with centrifugal clutch means power delivery is consistently smooth. Strong low-end power for climbing and steady engine braking for descending hills with ease, leaving you to enjoy the drive.

## HANDLING & CAPABILITY

The MULE PRO-MX™ breathes new life into the recreational side of the hardest working family of side x sides. Head out to the trails with confidence with push button selectable traction modes and ample ground clearance to travel through challenging terrain. A wide track stance and tight turning radius provide a nimble yet sure-footed drive, while 1,500-pound towing capability and 700-pound\* cargo bed capacity can handle big jobs in one trip.

\*600-lbs for CA models.



MULE PRO-MX™ EPS LE in Firecracker Red



MULE PRO-MX™ EPS in Bright White

## COMFORT & CONVENIENCE

The Kawasaki MULE PRO-MX™ side x side is the ideal mid-size solution, with ample shoulder and leg room for two passengers. Adjustable tilt steering and speed-sensitive Electric Power Steering (EPS) makes steering light and effortless for reduced fatigue, while independent double A-arm suspension ensures a comfortable drive. Contoured bench seating, integrated doors and ample storage add to an all-day comfortable and convenient drive.

## DURABILITY

Solid construction features a steel front bumper, steel diamond-plate cargo bed floor and floorboards. Under-hood engine and CVT air intakes help to supply clean, fresh air for optimal durability. The MULE PRO-MX™ side x sides will answer the task with grit and muscle, all backed by the industry-leading Kawasaki STRONG 3-Year Limited Warranty.

MULE PRO-MX™ EPS CAMO in Camouflage TrueTimber™ HTC Green

™/® & © 2018 TrueTimber Outdoors Holding Company, LLC. Manufactured and/or distributed under official license by Kawasaki Motors Corp., U.S.A.

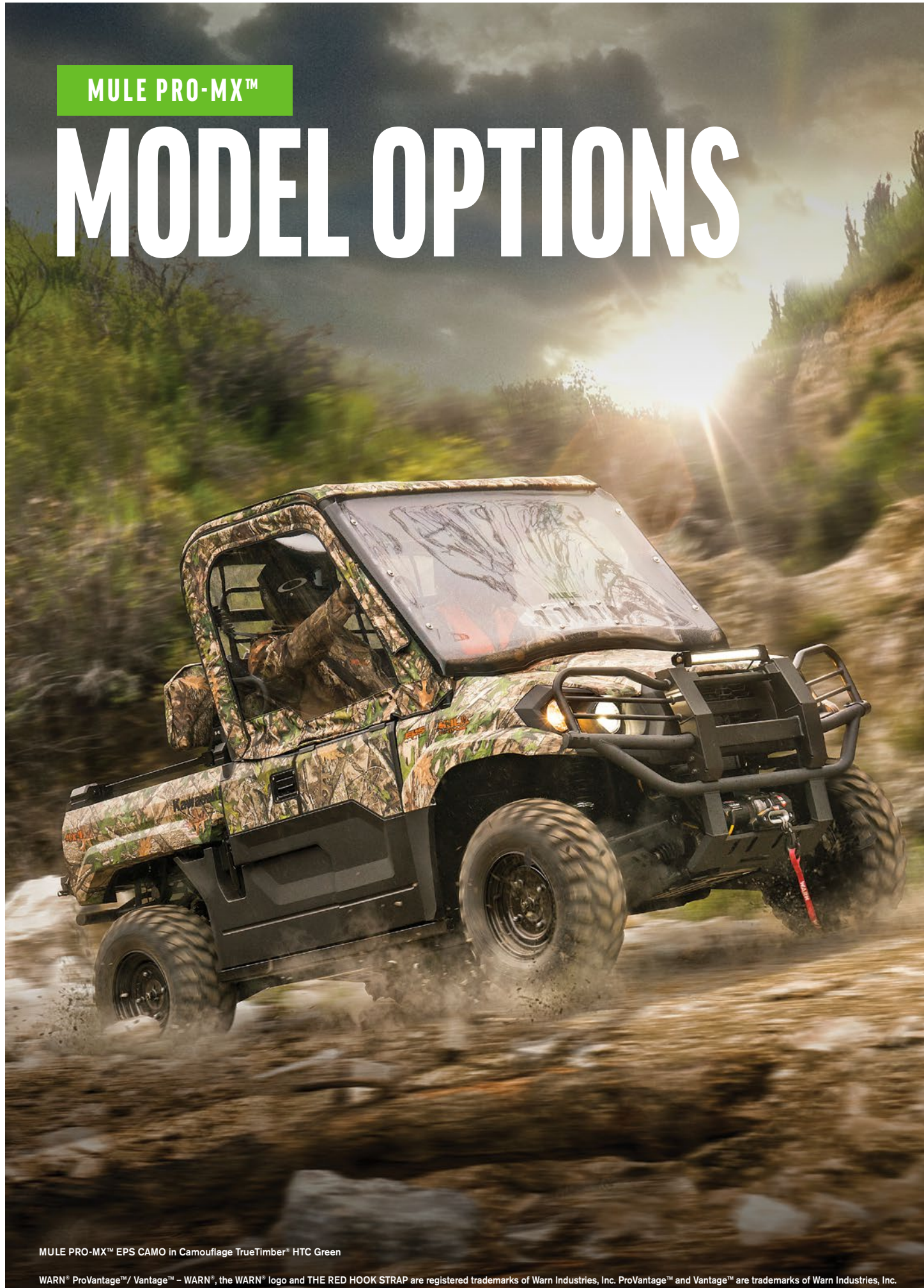
Accessorized units shown.





MULE PRO-MX™

# MODEL OPTIONS



MULE PRO-MX™ EPS CAMO in Camouflage TrueTimber® HTC Green

WARN® ProVantage™/ Vantage™ - WARN®, the WARN® logo and THE RED HOOK STRAP are registered trademarks of Warn Industries, Inc. ProVantage™ and Vantage™ are trademarks of Warn Industries, Inc.





● Camouflage TrueTimber® HTC Green



● Firecracker Red



● Timberline Green ○ Bright White

### MULE PRO-MX™ EPS CAMO

- 695cc, Single-cylinder, Fuel-Injected Engine
- Continuously Variable Transmission (CVT) with Centrifugal Clutch
- Electrically Selectable 2WD/4WD with Dual-mode Rear Differential
- Four-wheel Disc Brakes and Independent Parking Brake
- 1,500-lb Towing and 700-lb Hauling Capacity (600-lb for CA Models)
- Speed-sensitive Electric Power Steering (EPS) with Adjustable Tilt Steering Wheel
- Halogen and LED Headlights, Sun Top
- Camouflage Truetimber® HTC Green Bodywork

### MULE PRO-MX™ EPS LE

- 695cc, Single-cylinder, Fuel-Injected Engine
- Continuously Variable Transmission (CVT) with Centrifugal Clutch
- Electrically Selectable 2WD/4WD with Dual-mode Rear Differential
- Four-wheel Disc Brakes and Independent Parking Brake
- 1,500-lb Towing and 700-lb Hauling Capacity (600-lb for CA Models)
- Speed-sensitive Electric Power Steering (EPS) with Adjustable Tilt Steering Wheel
- Halogen and LED Headlights, Sun Top, Cast Aluminum Wheels

### MULE PRO-MX™ EPS

- 695cc, Single-cylinder, Fuel-Injected Engine
- Continuously Variable Transmission (CVT) with Centrifugal Clutch
- Electrically Selectable 2WD/4WD with Dual-mode Rear Differential
- Four-wheel Disc Brakes and Independent Parking Brake
- 1,500-lb Towing and 700-lb Hauling Capacity (600-lb for CA Models)
- Speed-sensitive Electric Power Steering (EPS) with Adjustable Tilt Steering Wheel
- Halogen and LED Headlights

™/® & © 2018 TrueTimber Outdoors Holding Company, LLC. Manufactured and/or distributed under official license by Kawasaki Motors Corp., U.S.A.



MULE PRO-MX™ EPS in Timberline Green

Accessorized units shown.



ACCESSORIES TO FIT YOUR LIFESTYLE

# MULE PRO-MX™ ACCESSORY PACKAGES



MULE PRO-MX™ EPS in Timberline Green

It's not truly yours until it's customized for your lifestyle. Built exclusively for your MULE PRO-MX™ side x side, these strong, durable and versatile packages are the best way to get the most out of your vehicle. Comprised of different Kawasaki Genuine Accessories, these packages are suited for specific uses, projects and adventures.

To help find the perfect package, visit **Kawasaki.com**.

WARN® ProVantage™/ Vantage™ – WARN®, the WARN® logo and THE RED HOOK STRAP are registered trademarks of Warn Industries, Inc. ProVantage™ and Vantage™ are trademarks of Warn Industries, Inc.™/® & © 2018 TrueTimber Outdoors Holding Company, LLC. Manufactured and/or distributed under official license by Kawasaki Motors Corp., U.S.A.





### ADVENTURE PACKAGE

- Half Windshield
- Brush Guard (with headlight guards)
- Rear Bumper
- CV Guards - Front & Rear
- Skid Plate - Front, Mid, Rear
- Tail Light Guards
- Rear View Mirror
- WARN® Vantage™ Winch



MULE PRO-MX™ EPS LE in Firecracker Red



### SPORTSMAN PACKAGE

- KQR™ Full Fixed Windshield - Poly
- Soft Cab Roof (Camo)
- Soft Cab Enclosure Back (Camo)
- Soft Cab Upper Doors (Camo)
- Seat Cover (Camo)
- ATV TEK Gun Boot
- Camo Gun Boot Cover
- KQR Gun Boot Mount



MULE PRO-MX™ EPS CAMO in Camouflage TrueTimber® HTC Green



### UTILITY PACKAGE

- Roof - Plastic
- Dome Light
- Horn
- Rear Bumper
- Rear View Mirror
- Trailer Hitch Ball Mount
- Chrome Hitch Ball, 2"
- Reducer Bushing



MULE PRO-MX™ EPS in Timberline Green





### ENCLOSED HARD CAB PACKAGE

- KQR™ Full Windshield - Glass
- Windshield Wiper Kit
- Windshield Washer Kit
- KQR Rear Panel - Polycarbonate
- Hard Cabin Enclosure Doors
- HD Springs (req'd for hard cab)
- Rear View Mirror



MULE PRO-MX™ EPS LE in Firecracker Red



### OPEN RANGE PACKAGE

- KQR™ Full Fixed Windshield - Poly
- LED Light Bar
- LED Light Bar Harness Kit
- Cabin Harness
- Brush Guard (with headlight guards)
- Tail Light Guards
- Seat Covers
- Floor Mat
- KQR Cargo Box
- KQR Accessories Mount
- Trailer Hitch Ball Mount
- Chrome Hitch Ball, 2"
- Reducer Bushing



MULE PRO-MX™ EPS in Timberline Green



### ENCLOSED SOFT CAB PACKAGE

- KQR™ Full Fixed Windshield - Poly
- Soft Cab Roof
- Soft Cab Enclosure Back
- Soft Cab Enclosure Upper Doors
- Rear View Mirror



MULE PRO-MX™ EPS LE in Firecracker Red



ACCESSORIES TO FIT YOUR LIFESTYLE

# MULE PRO-MX™ ACCESSORY PACKAGES



MULE PRO-MX™ EPS in Timberline Green

WARN® ProVantage™/ Vantage™ – WARN®, the WARN® logo and THE RED HOOK STRAP are registered trademarks of Warn Industries, Inc. ProVantage™ and Vantage™ are trademarks of Warn Industries, Inc.



BUILT TO DELIVER

# MULE™ 4010 4x4 & MULE™ 4000



MULE™ 4000 in Timberline Green

You can't quit during a hard day's work. You press on until the job is done. The 2019 Kawasaki MULE™ 4010 4x4 and MULE™ 4000 side x sides have the endurance to get you through the day plus the towing and cargo capacity to take the heavy load off your shoulders.



## FUEL-INJECTED POWER

The Kawasaki MULE™ 4010 4x4 and MULE™ 4000 side x sides deliver muscle with a dependable, fuel-injected 617cc V-twin engine. The smooth-running liquid-cooled four-stroke starts easily whether it's hot or cold and provides steady torque for smooth, responsive power when you need it.

MULE™ 4000 in Timberline Green

## CAPABLE DRIVETRAIN

A responsive automatic Continuously Variable Transmission (CVT) puts the power to the ground with high- and low-range forward and reverse. The MULE™ 4010 4x4 side x sides allow you to switch between 2WD and 4WD\* and feature a dual-mode rear differential for added traction when needed.

\*MULE™ 4000 is equipped with 2WD and dual-mode rear differential.

MULE™ 4000 in Timberline Green

## STURDY CHASSIS

The steel tube ladder-type frame is the sturdy foundation of the Kawasaki MULE™ side x sides. Optimized rigidity provides a comfortable drive while the Roll Over Protective Structure (ROPS) and steel front bumper provide a rugged external structure. The independent MacPherson strut-type front suspension and DeDion rear suspension provide the right type of stiffness for a work side x side.

MULE™ 4000 in Timberline Green



MULE™ 4010 4x4 & MULE™ 4000

# MODEL OPTIONS



MULE™ 4010 4x4 in Dark Royal Red





● Timberline Green ● Dark Royal Red

### MULE™ 4010 4x4

- 617cc, V-twin, 4-stroke Engine
- 2-inch Hitch Receiver with 1,200-lb Towing Capacity
- Steel Cargo Bed with 800-lb Capacity
- Continuously Variable Transmission (CVT) with High, Low, Neutral and Reverse
- Selectable 2WD/4WD with Dual-mode Rear Differential
- Electric Power Steering (EPS)



● Timberline Green

### MULE™ 4000

- 617cc, V-twin, 4-stroke Engine
- 2-inch Hitch Receiver with 1,200-lb Towing Capacity
- Steel Cargo Bed with 800-lb Capacity
- Continuously Variable Transmission (CVT) with High, Neutral and Reverse
- 2WD with Dual-mode Rear Differential



MULE™ 4010 4x4 in Dark Royal Red



COMPACT RELIABILITY

# MULE SX™



MULE SX™ 4x4 XC SE in Super Black

Styled in the image of its full-size MULE™ PRO siblings, MULE SX™ side x sides pack plenty of stout muscle into a compact and agile machine. Handle a wide variety of tasks with the ability to tread lightly and maneuver in tight areas or take a new path with the MULE SX™ 4x4 XC—a willing companion on the jobsite and on the weekends. Built rugged with off-road capability and reliable efficiency, MULE SX vehicles are ready for whatever your day has in store, whether it's work or fun.



## ENGINE / CVT / DRIVE

The MULE SX™ side x sides are powered by a strong, dependable 401cc single-cylinder four-stroke engine. A fully automatic Continuously Variable Transmission (CVT) has high and low forward ranges, providing simple operation and efficient engine range for a variety of loads or terrain.



MULE SX™ 4x4 XC SE in Super Black



MULE SX™ 4x4 in Dark Royal Red

## CARGO & TOWING

Although compact, MULE SX™ side x sides pack major muscle with a 400-pound hauling capacity and the ability to tow up to 1,100 pounds. The tilting steel cargo bed with latching tailgate features a textured floor, while integrated cargo bed rails allow for easy installation of Kawasaki Quick Release (KQR™) mounts and Kawasaki Genuine Accessories.

## AGILITY & TURNING

The maneuverability of the MULE SX™ side x sides are beyond compare. The compact size and tight turning radius allow the MULE SX vehicles to venture into tight areas with ease. With their lightweight and small stature, they can even fit into the bed of a full-size pickup truck for easy transport.

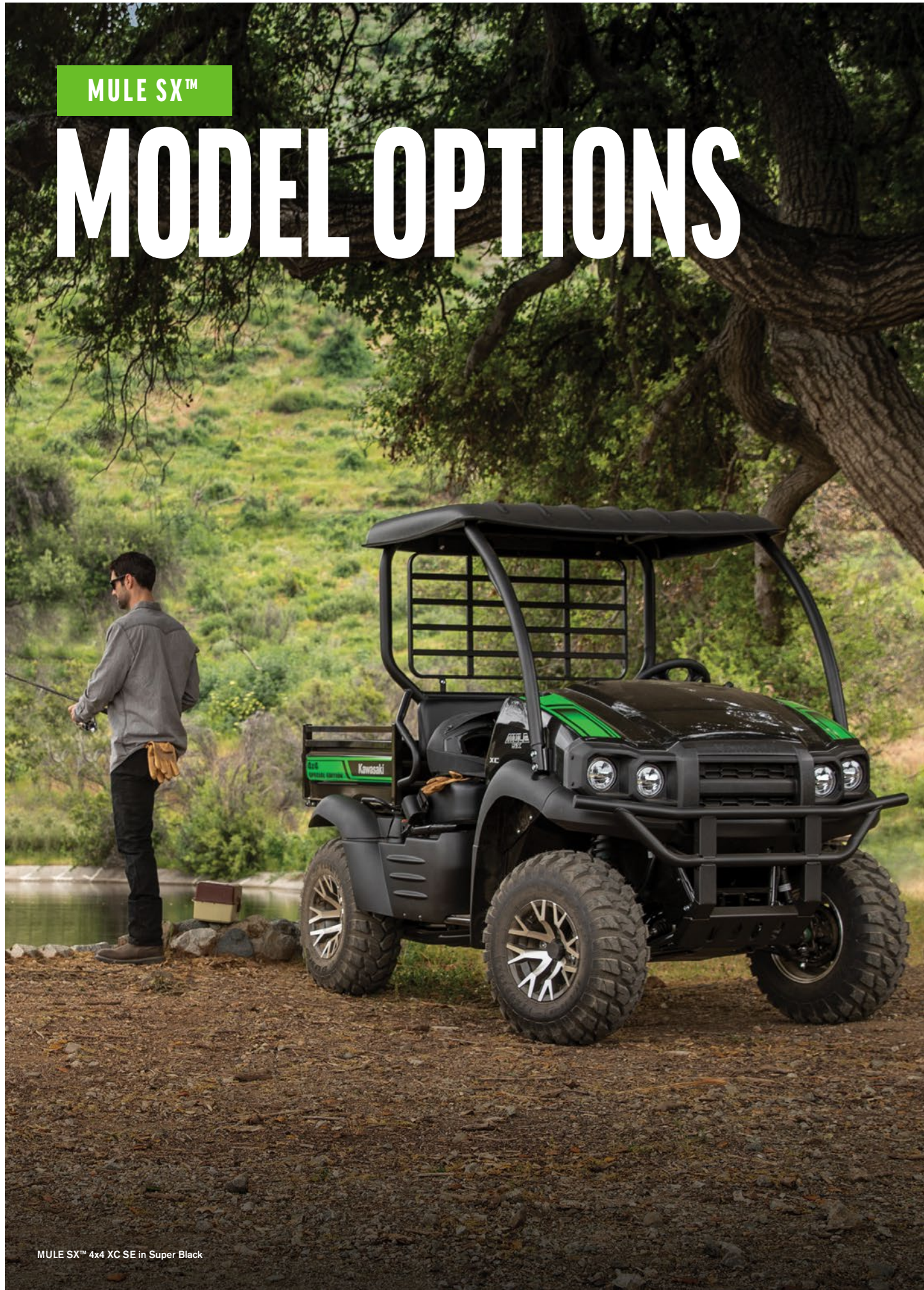
MULE SX™ in Dark Royal Red





MULE SX™

# MODEL OPTIONS



MULE SX™ 4x4 XC SE in Super Black





● Super Black



● Realtree Xtra® Green Camo



● Vibrant Blue



○ Bright White



● Dark Royal Red ● Timberline Green



● Timberline Green ● Dark Royal Red

### MULE SX™ 4x4 XC SE

- 401cc, Single Cylinder, 4-stroke Engine
- Selectable 2WD/4WD with Dual-mode Rear Differential
- 12-inch Cast Aluminum Wheels with Aggressive Tread 26-inch Tires
- Continuously Variable Transmission (CVT) with High, Low, Neutral and Reverse
- Sun Top
- Special Graphics and 4 High-intensity LED Headlights

### MULE SX™ 4x4 XC CAMO

- 401cc, Single Cylinder, 4-stroke Engine
- Selectable 2WD/4WD with Dual-mode Rear Differential
- 2 High-intensity LED Headlights
- 12-inch Wheels with 26-inch Tires
- Continuously Variable Transmission (CVT) with High, Low, Neutral and Reverse
- Realtree Xtra® Green Camo Bodywork

### MULE SX™ 4x4 XC

- 401cc, Single Cylinder, 4-stroke Engine
- Selectable 2WD/4WD with Dual-mode Rear Differential
- 2 Halogen Headlights
- 12-inch Wheels with 26-inch Tires
- Continuously Variable Transmission (CVT) with High, Low, Neutral and Reverse

### MULE SX™ 4x4 SE

- 401cc, Single Cylinder, 4-stroke Engine
- Selectable 2WD/4WD with Dual-mode Rear Differential
- 2 Halogen Headlights
- 24-inch Duro Tires
- Towing Hitch Drawbar and Dash-mounted Horn
- Continuously Variable Transmission (CVT) with High, Low, Neutral and Reverse

### MULE SX™ 4x4

- 401cc, Single Cylinder, 4-stroke Engine
- Selectable 2WD/4WD with Dual-mode Rear Differential
- 2 Halogen Headlights
- 24-inch Duro Tires
- Continuously Variable Transmission (CVT) with High, Low, Neutral and Reverse

### MULE SX™

- 401cc, Single Cylinder, 4-stroke Engine
- 2WD with Dual-mode Rear Differential
- 2 Halogen Headlights
- 22-inch Duro Tires
- Continuously Variable Transmission (CVT) with High, Neutral and Reverse





MULE PRO-MX™ EPS in Timberline Green



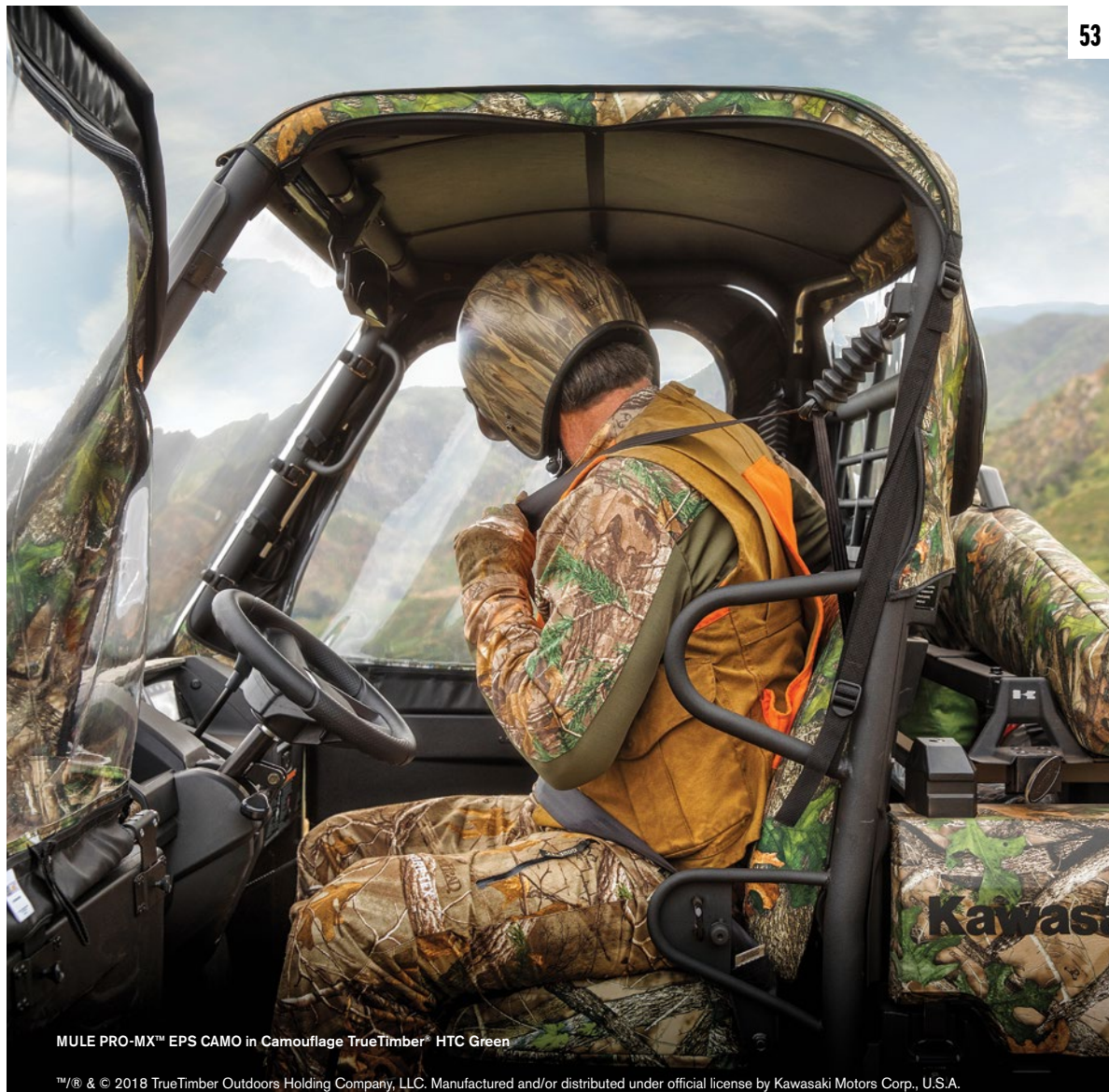
MULE PRO-FXR™ in Candy Plasma Blue

WARN® ProVantage™/ Vantage™ – WARN®, the WARN® logo and THE RED HOOK STRAP are registered trademarks of Warn Industries, Inc. ProVantage™ and Vantage™ are trademarks of Warn Industries, Inc.



MULE PRO-FXT™ EPS in Bright White





MULE PRO-MX™ EPS CAMO in Camouflage TrueTimber® HTC Green

™/® & © 2018 TrueTimber Outdoors Holding Company, LLC. Manufactured and/or distributed under official license by Kawasaki Motors Corp., U.S.A.



MULE PRO-FXT™ in Super Black



## MULE™ SIDE X SIDES SPECS

## MULE™ 4010 TRANS4x4® / CAMO

## MULE™ 4010 4x4

ENGINE	4-stroke, 2-cylinder, OHV, 90° V Liquid-cooled	4-stroke, 2-cylinder, OHV, 90° V Liquid-cooled
DISPLACEMENT	617cc	617cc
BORE X STROKE	2.99x2.68 in	2.99x2.68 in
COMPRESSION RATIO	10:3:1	10:3:1
MAXIMUM TORQUE	34.7 lb-ft @ 2500 rpm	34.7 lb-ft @ 2500 rpm
FUEL SYSTEM	DFI® with 34mm Mikuni throttle body	DFI® with 34mm Mikuni throttle body
TRANSMISSION	Continuously Variable Transmission (CVT) with (H,L,N,R)	Continuously Variable Transmission (CVT) with (H,L,N,R)
FINAL DRIVE	Selectable 2WD/4WD, shaft. Dual mode rear differential with differential lock	Selectable 2WD/4WD, shaft. Dual mode rear differential with differential lock
ENGINE BRAKING	No	No
ALTERNATOR OUTPUT (MAX)	23 amp	23 amp
FRONT SUSPENSION / WHEEL TRAVEL	MacPherson Strut/3.9 in	MacPherson Strut/3.9 in
REAR SUSPENSION / WHEEL TRAVEL	DeDion Axle/2.8 in	DeDion Axle/2.8 in
FRONT TIRES	23x11.00-10	23x11.00-10
REAR TIRES	23x11.00-10	23x11.00-10
PARK BRAKE TYPE	Independent, Mechanical Drum	Independent, Mechanical Drum
STEERING	Electric Power Steering (EPS)	Electric Power Steering (EPS)
FRONT BRAKES	Drum	Drum
REAR BRAKES	Drum	Drum
GROUND CLEARANCE	7.1 in	6.9 in
FUEL CAPACITY	6.3 gal	6.3 gal
TURNING RADIUS	12.8 ft	11.2 ft
CARGO BED DIMENSIONS (LXWXH)	50.4 x 47.6 x 11.2 in (2-person) 30.3 x 47.6 x 11.2 in (4-person)	46.3 x 51.6 x 11.4 in
CARGO BED CAPACITY	800 lb (2-person) 400 lb (4-person)	800 lb
LOAD CAPACITY	1330 lb	1327 lb
SEATING CAPACITY	2-4	2
TOWING CAPACITY	1200 lb	1200 lb
LIGHTING	(2) Halogen headlights (2) tail/brake lights	(2) Halogen headlights (2) tail/brake lights
OVERALL LENGTH	128.5 in	116.7 in
OVERALL WIDTH	58.5 in	62.0 in
OVERALL HEIGHT	75.8 in	75.8 in
CURB WEIGHT	1586.9 lb**	1432.6 lb**
WHEELBASE	85.2 in	73.6 in
INSTRUMENTS	Parking brake warning light, coolant temperature warning light, horn, 12V DC outlet, fuel gauge, hour meter	Parking brake warning light, coolant temperature warning light, horn, 12V DC outlet, fuel gauge, hour meter
WHEEL TYPE	Steel	Steel
WARRANTY	Kawasaki Strong 3-Year Limited Warranty	Kawasaki Strong 3-Year Limited Warranty
KAWASAKI PROTECTION PLUS™ (OPTIONAL)	12, 24 or 36 months	12, 24 or 36 months

\*\*Curb weight includes all necessary materials and fluids to operate correctly, full tank of fuel (more than 90 percent capacity) and tool kit (if supplied). Specifications subject to change.

Realtree APG-XTRA Camouflage Design © 2012 of Jordan Outdoor Enterprises, Ltd., all rights reserved.



## MULE™ 4000

## MULE™ 4000 TRANS™

ENGINE	4-stroke, 2-cylinder, OHV 90° V Liquid-cooled	4-stroke, 2-cylinder, OHV, 90° V, liquid-cooled
DISPLACEMENT	617cc	617cc
BORE X STROKE	2.99x2.68 in	2.99x2.68 in
COMPRESSION RATIO	10:3:1	10:3:1
MAXIMUM TORQUE	34.7 lb-ft @ 2500 rpm	34.7 lb-ft @ 2500 rpm
FUEL SYSTEM	DFI® with 34mm Mikuni throttle body	DFI® with 34mm Mikuni throttle body
TRANSMISSION	Continuously Variable Transmission (CVT) with (H,N,R)	Continuously Variable Transmission (CVT) with (H,N,R)
FINAL DRIVE	2WD, shaft. Dual mode rear differential with differential lock	2WD, shaft. Dual mode rear differential with differential lock
ALTERNATOR OUTPUT (MAX)	23 amp	23 amp
ENGINE BRAKING	No	No
FRONT SUSPENSION / WHEEL TRAVEL	MacPherson Strut/3.9 in	MacPherson Strut/3.9 in
REAR SUSPENSION / WHEEL TRAVEL	DeDion Axle/2.8 in	DeDion Axle/2.8 in
FRONT TIRES	23x11.00-10	23x11.00-10
REAR TIRES	23x11.00-10	23x11.00-10
PARK BRAKE TYPE	Independent, Mechanical Drum	Independent, Mechanical Drum
STEERING	Rack-and-pinion	Electric Power Steering (EPS)
FRONT BRAKES	Drum	Drum
REAR BRAKES	Drum	Drum
GROUND CLEARANCE	7.5 in	7.7 in
FUEL CAPACITY	6.3 gal	6.3 gal
TURNING RADIUS	11.0 ft	12.8 ft
CARGO BED DIMENSIONS (LXWXH)	46.3 x 51.6 x 11.4 in	50.4 x 47.6 x 11.2 in (2-person) 30.3 x 47.6 x 11.2 in (4-person)
CARGO BED CAPACITY	800 lb	800 lb (2-person) 400 lb (4-person)
LOAD CAPACITY	1327 lb	1330 lb
SEATING CAPACITY	2	2-4
TOWING CAPACITY	1200 lb	1200 lb
LIGHTING	(2) Halogen headlights (2) tail/brake lights	(2) Halogen headlights (2) tail/brake lights
OVERALL LENGTH	116.7 in	128.5 in
OVERALL WIDTH	62.0 in	58.5 in
OVERALL HEIGHT	75.8 in	78.1 in
CURB WEIGHT	1338.4 lb**	1514.1 lb**
WHEELBASE	73.6 in	85.2 in
INSTRUMENTS	Parking brake warning light, coolant temperature warning light, horn, 12V DC outlet, fuel gauge, hour meter	Parking brake warning light, coolant temperature warning light, horn, 12V DC outlet, fuel gauge, hour meter
WHEEL TYPE	Steel	Steel
WARRANTY	Kawasaki Strong 3-Year Limited Warranty	Kawasaki Strong 3-Year Limited Warranty
KAWASAKI PROTECTION PLUS™ (OPTIONAL)	12, 24 or 36 months	12, 24 or 36 months

\*\*Curb weight includes all necessary materials and fluids to operate correctly, full tank of fuel (more than 90 percent capacity) and tool kit (if supplied). Specifications subject to change.



# MULE™ SIDE X SIDES SPECS

	MULE SX™ 4x4 XC / CAMO / SE	MULE™ SX 4x4 / SE	MULE SX™
ENGINE	4-stroke, single-cylinder, OHV, air-cooled	4-stroke, single-cylinder, OHV, air-cooled	4-stroke, single-cylinder, OHV, air-cooled
DISPLACEMENT	401cc	401cc	401cc
BORE X STROKE	3.23x2.99 in	3.23x2.99 in	3.23x2.99 in
COMPRESSION RATIO	8.6:1	8.6:1	8.3:1
MAXIMUM TORQUE	21.4 lb-ft @ 2400 rpm	21.7 lb-ft @ 2400 rpm	20.6 lb-ft @ 2200 rpm
FUEL SYSTEM	Fuel injection	Nikki 6C1026 carburetor	Nikki 6C1026 carburetor
TRANSMISSION	Continuously Variable Transmission (CVT) with (H,L,N,R)	Continuously Variable Transmission (CVT) with (H,L,N,R)	Continuously Variable Transmission (CVT) with (H,N,R)
FINAL DRIVE	Selectable 2WD/4WD, shaft. Dual mode rear differential with differential lock	Selectable 2WD/4WD, shaft. Dual mode rear differential with differential lock	2WD, shaft. Dual mode rear differential with differential lock
ENGINE BRAKING	No	No	No
ALTERNATOR OUTPUT (MAX)	22.9 amp	17 amp	17 amp
FRONT SUSPENSION / WHEEL TRAVEL	MacPherson Strut/3.1 in	MacPherson Strut/3.1 in	MacPherson Strut/3.1 in
REAR SUSPENSION / WHEEL TRAVEL	Unit Swingarm/3.1 in	Unit Swingarm/3.1 in	Unit Swingarm/3.1 in
FRONT TIRES	26x9.00-12	24x9.00-10	22x9.00-10
REAR TIRES	26x9.00-12	24x11.00-10	22x11.00-10
PARK BRAKE TYPE	Independent, Mechanical Drum	Independent, Mechanical Drum	Independent, Mechanical Drum
STEERING	Rack-and-pinion, Tilt steering	Rack-and-pinion, Tilt steering	Rack-and-pinion, Tilt steering
FRONT BRAKES	Drum	Drum	Drum
REAR BRAKES	Drum	Drum	Drum
GROUND CLEARANCE	8.1 in	6.7 in	6.1 in
FUEL CAPACITY	4.2 gal	4.2 gal	4.2 gal
TURNING RADIUS	11.8 ft	10.8 ft	10.8 ft
CARGO BED DIMENSIONS (LXWXH)	35.6 x 40.9 x 9.6 in	35.6 x 40.9 x 9.6 in	35.6 x 40.9 x 9.6 in
CARGO BED CAPACITY	400 lb	400 lb	400 lb
LOAD CAPACITY	884 lb	906 lb	926 lb
SEATING CAPACITY	2	2	2
TOWING CAPACITY	1100 lb*	1100 lb**	1100 lb**
LIGHTING	(4) LED headlights, tail/brake lights	(2) Halogen headlights, tail/brake lights	(2) Halogen headlights, tail/brake lights
OVERALL LENGTH	106.7 in	106.7 in	106.7 in
OVERALL WIDTH	52.6 in	52.6 in	52.6 in
OVERALL HEIGHT	75.0 in	70.9 in	70.1 in
CURB WEIGHT	1098.1 lb**	1040.8 lb**	967.6 lb**
WHEELBASE	70.1 in	70.1 in	70.1 in
INSTRUMENTS	Fuel gauge, hour meter, oil temp light, parking brake light	Fuel gauge, hour meter, oil temp light, parking brake light / horn (SE only)	Fuel gauge, hour meter, oil temp light, parking brake light
WHEEL TYPE	Alloy	Steel	Steel
WARRANTY	Kawasaki Strong 3-Year Limited Warranty	Kawasaki Strong 3-Year Limited Warranty	Kawasaki Strong 3-Year Limited Warranty
KAWASAKI PROTECTION PLUS™ (OPTIONAL)	12, 24 or 36 months	12, 24 or 36 months	12, 24 or 36 months

\*Requires Optional Hitch

\*\*Curb weight includes all necessary materials and fluids to operate correctly, full tank of fuel (more than 90 percent capacity) and tool kit (if supplied).

Specifications subject to change.

Realtree APG-XTRA Camouflage Design © 2012 of Jordan Outdoor Enterprises, Ltd., all rights reserved.



### MULE PRO-FXR™

### MULE PRO-FXT™ / EPS / EPS LE / EPS CAMO / RANCH EDITION

### MULE PRO-FX™ / EPS / EPS LE

ENGINE	4-stroke, 3-cylinder, DOHC, liquid-cooled, gas	4-stroke, 3-cylinder, DOHC, liquid-cooled, gas	4-stroke, 3-cylinder, DOHC, liquid-cooled, gas
DISPLACEMENT	812cc	812cc	812cc
BORE X STROKE	2.83x2.62 in	2.83x2.62 in	2.83x2.62 in
COMPRESSION RATIO	9.5:1	9.5:1	9.5:1
MAXIMUM TORQUE	48.0 lb-ft @ 3500 rpm	48.0 lb-ft @ 3500 rpm	48.0 lb-ft @ 3500 rpm
FUEL SYSTEM	DFI® with 34mm throttle body	DFI® with 34mm throttle body	DFI® with 34mm throttle body
TRANSMISSION	Continuously Variable Transmission (CVT) with (H,L,N,R)	Continuously Variable Transmission (CVT) with (H,L,N,R)	Continuously Variable Transmission (CVT) with (H,L,N,R)
FINAL DRIVE	Selectable 2WD/4WD, shaft. Dual mode rear differential with differential lock	Selectable 2WD/4WD, shaft. Dual mode rear differential with differential lock	Selectable 2WD/4WD, shaft. Dual mode rear differential with differential lock
ENGINE BRAKING	Yes	Yes	Yes
ALTERNATOR OUTPUT (MAX)	75 amp	75 amp	75 amp
FRONT SUSPENSION / WHEEL TRAVEL	Double wishbone/8.7 in	Double wishbone/8.7 in	Double wishbone/8.7 in
REAR SUSPENSION / WHEEL TRAVEL	Double wishbone/8.5 (L) /8.7 (R) in	Double wishbone/8.5 (L) /8.7 (R) in	Double wishbone/8.5 (L) /8.7 (R) in
FRONT TIRES	27x9.00-12, radial	26x9.00-12, radial	26x9.00-12, radial
REAR TIRES	27x11.00-12, radial	26x11.00-12, radial	26x11.00-12, radial
PARK BRAKE TYPE	Independent, Mechanical Disc	Independent, Mechanical Disc	Independent, Mechanical Disc
STEERING	Electric Power Steering (EPS), Tilt steering	Electric Power Steering (EPS), Tilt steering	Electric Power Steering (EPS), Tilt steering
FRONT BRAKES	Dual Disc, 2 piston caliper	Dual Disc, 2 piston caliper	Dual Disc, 2 piston caliper
REAR BRAKES	Dual Disc, 1 piston caliper	Dual Disc, 1 piston caliper	Dual Disc, 1 piston caliper
GROUND CLEARANCE	10.8 in	10.0 in	10.4 in
FUEL CAPACITY	7.9 gal	7.9 gal	7.9 gal
TURNING RADIUS	14.0 ft	16.0 ft	16.0 ft
CARGO BED DIMENSIONS (LXWXH)	37.6 x 53.3 x 11.0 in	42.7 x 53.7 x 11.0 in (3-person) 22.0 x 53.7 x 11.0 in (6-person)	54.1 x 53.3 x 11.0 in
CARGO BED CAPACITY	1000 lb (600 lb for California models)	1000 lb (3-person) 350 lb (6-person) (600 lb for California models)	1000 lb (600 lb for California models)
LOAD CAPACITY	1616 lb	1574 lb	1616 lb
SEATING CAPACITY	3	3-person (1 row), 6 person (2 row)	3
TOWING CAPACITY	2000 lb	2000 lb	2000 lb
LIGHTING	(2) Halogen headlights. (2) LED headlights	(2) Halogen headlights. (2) LED headlights	(2) Halogen headlights. (2) LED headlights
OVERALL LENGTH	121.5 in	135.6 in	133.3 in
OVERALL WIDTH	64.0 in	64.0 in	64.0 in
OVERALL HEIGHT	77.2 in	79.5 in	79.7 in
CURB WEIGHT	1768.4 lb**	1962.5 lb**	1832.4 lb**
WHEELBASE	79.7 in	92.3 in	92.3 in
INSTRUMENTS	Multi-function display includes digital speedometer, fuel gauge, odometer, hour meter, clock, dual trip meters, 2WD/4WD indicator, water temperature warning indicator, oil pressure warning indicator, fuel injection warning indicator, CVT and EPS warning indicators, neutral, reverse and parking indicators, seatbelt reminder lamps	Multi-function display includes digital speedometer, fuel gauge, odometer, hour meter, clock, dual trip meters, 2WD/4WD indicator, water temperature warning indicator, oil pressure warning indicator, fuel injection warning indicator, CVT and EPS warning indicators, neutral, reverse and parking indicators, seatbelt reminder lamps	Multi-function display includes digital speedometer, fuel gauge, odometer, hour meter, clock, dual trip meters, 2WD/4WD indicator, water temperature warning indicator, oil pressure warning indicator, fuel injection warning indicator, CVT and EPS warning indicators, neutral, reverse and parking indicators, seatbelt reminder lamps
WHEEL TYPE	Alloy	Alloy	Alloy
WARRANTY	Kawasaki Strong 3-Year Limited Warranty	Kawasaki Strong 3-Year Limited Warranty	Kawasaki Strong 3-Year Limited Warranty
KAWASAKI PROTECTION PLUS™ (OPTIONAL)	12, 24 or 36 months	12, 24 or 36 months	12, 24 or 36 months

\*\*Curb weight includes all necessary materials and fluids to operate correctly, full tank of fuel (more than 90 percent capacity) and tool kit (if supplied).

Specifications subject to change.

Realtree APG-XTRA Camouflage Design © 2012 of Jordan Outdoor Enterprises, Ltd., all rights reserved.



## MULE™ SIDE X SIDES SPECS

	MULE PRO-DXT™ / EPS	MULE PRO-DX™ EPS	MULE PRO-MX™ EPS / CAMO / LE
ENGINE	4-stroke, 3-cylinder, OHV, liquid-cooled, diesel	4-stroke, 3-cylinder, OHV, liquid-cooled, diesel	4-stroke, single cylinder, SOHC, 4-valve liquid-cooled
DISPLACEMENT	993cc	993cc	695cc
BORE X STROKE	2.91x3.03 in	2.91x3.03 in	4.02x3.35 in
COMPRESSION RATIO	23.5:1	23.5:1	10.3:1
MAXIMUM TORQUE	38.3 lb-ft @ 2400 rpm	38.3 lb-ft @ 2400 rpm	42.7 lb-ft @ 5000 rpm
FUEL SYSTEM	Bosch in-line injection pump	Bosch in-line injection pump	DFI® with 44mm throttle body
TRANSMISSION	Continuously Variable Transmission (CVT) with (H,L,N,R)	Continuously Variable Transmission (CVT) with (H,L,N,R)	Continuously Variable Transmission (CVT) with centrifugal clutch, (H,L,N,R)
FINAL DRIVE	Selectable 2WD/4WD, shaft. Dual mode rear differential with differential lock	Selectable 2WD/4WD, shaft. Dual mode rear differential with differential lock	Selectable 2WD/4WD, shaft. Dual mode rear differential with differential lock
ENGINE BRAKING	Yes	Yes	Yes
ALTERNATOR OUTPUT (MAX)	55 amp	55 amp	35.7 amp
FRONT SUSPENSION / WHEEL TRAVEL	Double wishbone/8.7 in	Double wishbone/8.7 in	Double wishbone/8.6 in
REAR SUSPENSION / WHEEL TRAVEL	Double wishbone/8.5 (L) /8.7 (R) in	Double wishbone/8.5 (L) /8.7 (R) in	Double wishbone/9.1 in
FRONT TIRES	26x9.00-12	26x9.00-12	25x10.00-12, radial
REAR TIRES	26x11.00-12	26x11.00-12	25x10.00-12, radial
PARK BRAKE TYPE	Independent, Mechanical Disc	Independent, Mechanical Disc	Independent, Mechanical Disc
STEERING	Electric Power Steering (EPS), Tilt steering	Electric Power Steering (EPS), Tilt steering	Electric Power Steering (EPS), Tilt steering
FRONT BRAKES	Dual Disc, 2 piston caliper	Dual Disc, 2 piston caliper	Dual Disc, 2 piston caliper
REAR BRAKES	Dual Disc, 1 piston caliper	Dual Disc, 1 piston caliper	Dual Disc, 1 piston caliper
GROUND CLEARANCE	10.2 in	10.4 in	10.6 in
FUEL CAPACITY	7.9 gal	7.9 gal	9.5 gal
TURNING RADIUS	16.0 ft	16.0 ft	14.0 ft
CARGO BED DIMENSIONS (LXWXH)	42.7 x 53.7 x 11.0 in (3-person) 22.0 x 53.7 x 11.0 in (6-person)	54.1 x 53.3 x 11.0 in	33.4 x 44.1 x 9.1 in
CARGO BED CAPACITY	1000 lb (3-person) 350 lb (6-person)	1000 lb	700 lb (600 lb California models)
LOAD CAPACITY	1616 lb	1581 lb	1200 lb
SEATING CAPACITY	3-person (1 row), 6 person (2 row)	3	2
TOWING CAPACITY	2000 lb	2000 lb	1500 lb
LIGHTING	(2) Halogen headlights (2) LED Headlights	(2) Halogen headlights. (2) LED headlights	(2) Halogen headlights. (2) LED headlights
OVERALL LENGTH	133.3 in	133.3 in	110.0 in
OVERALL WIDTH	64.0 in	64.0 in	60.0 in
OVERALL HEIGHT	79.5 in	77.4 in	74.4 in
CURB WEIGHT	1931.6 lb**	1872.0 lb**	1587.6 lb**
WHEELBASE	92.3 in	92.3 in	78.9 in
INSTRUMENTS	Multi-function display includes digital speedometer, fuel gauge, odometer, hour meter, clock, dual trip meters, 2WD/4WD indicator, water temperature warning indicator, oil pressure warning indicator, glow plug indicator, CVT and EPS warning indicators, neutral, reverse and parking indicators, seatbelt reminder lamps	Multi-function display includes digital speedometer, fuel gauge, odometer, hour meter, clock, dual trip meters, 2WD/4WD indicator, water temperature warning indicator, oil pressure warning indicator, glow plug indicator, CVT and EPS warning indicators, neutral, reverse and parking indicators, seatbelt reminder lamps	Multi-function display includes digital speedometer, fuel gauge, odometer, hour meter, clock, dual trip meters, 2WD/4WD indicator, water temperature warning indicator, EPS warning indicators, neutral, reverse and parking indicators, differential indicator lamp, seatbelt reminder lamps
WHEEL TYPE	Steel	Steel	Steel
WARRANTY	Kawasaki Strong 3-Year Limited Warranty	Kawasaki Strong 3-Year Limited Warranty	Kawasaki Strong 3-Year Limited Warranty
KAWASAKI PROTECTION PLUS™ (OPTIONAL)	12, 24, or 36 months	12, 24, or 36 months	12, 24 or 36 months

\*\*Curb weight includes all necessary materials and fluids to operate correctly, full tank of fuel (more than 90 percent capacity) and tool kit (if supplied). Specifications subject to change.

™/® & © 2018 TrueTimber Outdoors Holding Company, LLC. Manufactured and/or distributed under official license by Kawasaki Motors Corp., U.S.A.





MULE PRO-MX™ EPS in Bright White



MULE PRO-MX™ EPS LE in Firecracker Red

WARN® ProVantage™/ Vantage™ – WARN®, the WARN® logo and THE RED HOOK STRAP are registered trademarks of Warn Industries, Inc. ProVantage™ and Vantage™ are trademarks of Warn Industries, Inc.



MULE PRO-MX™ EPS in Timberline Green



### **Zedmotorz**

Surra 45703, Kuwait,

**PHONE:** +96524828072 **FAX:** +96524828073

**EMAIL:** zed@zedmotorz.com

**WEBSITE:** www.zedmotorz.com

### **KAWASAKI STRONG 3-YEAR LIMITED WARRANTY**

Kawasaki MULE™ side x sides are backed with the industry-leading Kawasaki STRONG 3-Year Limited Warranty.

### **UP TO THREE YEARS ADDITIONAL COVERAGE**

Let Kawasaki protect your new vehicle for years to come with Kawasaki Protection Plus™. This plan repairs or replaces covered components free of charge if found defective in material or workmanship. Everything about the plan is easy: There's no deductible. It's honored at every authorized Kawasaki dealer nationwide. It's transferable to another owner with no fee. Just ask your dealer how you can buy additional coverage of 12, 24 or 36 months, depending on the model and plan purchased. FL Lic #65500, Kawasaki Motors Corp., U.S.A., PO Box 25252, Santa Ana, CA 92799, (949) 770-0400.

### **KAWASAKI CARES:**

Always wear protective gear appropriate for the use of this vehicle. Never operate under the influence of drugs or alcohol. Protect the environment. The Kawasaki MULE™ side x side is an off-highway vehicle only, and is not designed, equipped, or manufactured for use on public streets; roads or highways. Obey the laws and regulations that control the use of your vehicle. Read Owner's Manual and all on product warnings.



Kawasaki subscribes to the guidelines of Tread Lightly!® a program dedicated to protecting the great outdoors through education and fostering responsible enjoyment of public lands.



All trademarks, registered trademarks, logos, and copyrights are the property of their respective owners. Accessorized unit shown.

©2018 Kawasaki Motors Corp., U.S.A. Printed in U.S.A.  
99969-3725



\*Assembled in the U.S.A. badge does not apply to MULE PRO-MX™ models.

WARN® ProVantage™/ Vantage™ – WARN®, the WARN® logo and THE RED HOOK STRAP are registered trademarks of Warn Industries, Inc. ProVantage™ and Vantage™ are trademarks of Warn Industries, Inc.

# **Kawasaki**